

Customized Integration Outdoor Power Cabinet Network Rack Waterproof Floor Installed

Our Product Introduction

for more products please visit us on power-cabinets.com

Basic Information

- Place of Origin: SHENZHEN
- Brand Name: daxin
- Certification: CE
- Model Number: ODC-210909C2T
- Minimum Order Quantity: 1 pcs
- Packaging Details: Woodcase/ Paper box
- Delivery Time: 15-25 days
- Payment Terms: T/T
- Supply Ability: 10000pcs/month



Product Specification

- Capacity: 48V/10A~150A
- Product Category: Outdoor Power Cabinet
- Humidity Range: 10% To 95%
- Surface: Outdoor Powder Coating
- Installation Method: Floor Installed
- Product Name: Voltage Stability/power Supply Cabinet/power Supply Cabinet Power/AC To DC Power Supply/48V Power Supply
- Cabinet Layout: One Compartment
- Input Voltage: 100-240V
- Highlight: Customized Integration Outdoor Power Cabinet, Floor Installed Outdoor Network Rack, Customized Waterproof Network Cabinet



More Images



Product Description

Embedded Power Supply Daxin Outdoor Power Cabinet Internal Dimension W×D×H 482.3×380×44mm

Product Description:

The Outdoor Power Cabinet has an internal dimension of W×D×H 482.3×380×44mm, providing ample space to accommodate various types of power equipment. It is designed for floor installation, making it easy to set up and move around as needed. This product is available in different capacities ranging from 48V/10A to 150A, so you can choose the one that best suits your needs and requirements. The embedded power supply brand of the Outdoor Power Cabinet is Daxin, a reputable and reliable manufacturer known for their high-quality power equipment. This brand ensures that your power supply is of the highest quality and will provide you with the power you need for all your outdoor activities. The input voltage of the Outdoor Power Cabinet is 100-240V, making it compatible with various power sources.

The Outdoor Power Cabinet is the perfect solution for those who need a reliable and safe power source when working or enjoying the great outdoors. Its robust construction ensures that it can withstand harsh weather conditions and other outdoor elements, while its floor installation method makes it easy to set up and use. With its different capacities and Daxin embedded power supply brand, you can be sure that you are getting the best quality power supply for your needs.

Features:

Product Name: Outdoor Power Cabinet

Product Category: Exterior Energy Cabinet

Mount Way: 19-inch Mount

Humidity Range: 10% To 95%

Mtp Connector RI: ≥60dB

Power Supply: AC to DC power supply

Voltage Stability: 48V power supply

Technical Parameters:

Cabinet Layout	One Compartment
Temperature Range	-40°C To 55°C
Input Voltage	100-240V
Embedded Power Supply Brand	Daxin
Mount Way	19-inch Mount
Product Name	voltage stability/power supply cabinet/power supply cabinet power/AC to DC power supply/48V power supply
Installation Method	Floor Installed
Product Category	Outdoor Power Cabinet
Internal Dimension	W×D×H 482.3×380×44mm
Surface	Outdoor Powder Coating

The Outdoor Power Cabinet is also known as the Outdoor Energy Locker, Outside Electricity Case, or Open-Air Power Container.

Applications:

1. Telecom and Networking

The daxin Outdoor Power Cabinet is ideal for telecom and networking applications. It can be used to house and protect the necessary equipment for wireless communication, such as antennas, signal boosters, and routers. Its weatherproof design ensures that the equipment is protected from harsh outdoor conditions.

2. Traffic and Transportation

The Outdoor Power Cabinet is also suitable for traffic and transportation applications. It can be used to power streetlights, traffic lights, and other electrical equipment in outdoor settings. Its sturdy construction and weatherproof design make it an ideal choice for harsh outdoor environments.

3. Industrial and Commercial

The daxin Outdoor Power Cabinet is also suitable for industrial and commercial applications. It can be used to provide power for various equipment and machinery, such as pumps, compressors, and generators. Its one compartment cabinet layout and 19-inch mount make it easy to install and use.

4. Residential and Recreational

The Outdoor Power Cabinet is also suitable for residential and recreational applications. It can be used to power outdoor lighting, sound systems, and other electrical equipment in gardens and outdoor recreational areas. Its outdoor powder coating ensures that it can withstand exposure to the elements.

The dixin Outdoor Power Cabinet is CE certified and made in SHENZHEN. The minimum order quantity is 10 units, and the price is \$1900. The packaging details include a wooden crate or cardboard box. Payment terms are T/T, and the supply ability is 10000Taiwan/month. The delivery time is 30 days. The installation method is floor installed, and the mount way is 19-inch mount. The MTP connector RL is ≥ 60 dB.

Support and Services:

The Outdoor Power Cabinet is a durable and weather-resistant enclosure designed to protect and power electronic equipment in outdoor environments. Our team of technical support specialists are available to assist with any product-related questions or issues. Additionally, we offer a range of services to ensure optimal performance and longevity of the cabinet, including:

Installation and commissioning

Preventative maintenance

Remote monitoring and diagnostics

On-site repairs and replacements

Upgrades and retrofits

Our goal is to provide reliable and efficient power solutions for your outdoor equipment needs. Contact us for more information on our technical support and services.

Packing and Shipping:

Product Packaging:

The Outdoor Power Cabinet will be packaged securely in a cardboard box with foam cushioning to prevent any damage during transportation.

Shipping:

Shipping will be handled by our trusted delivery partners and will be shipped within 1-3 business days of receiving the order. Delivery times may vary depending on the destination, but typically it takes 3-7 business days for delivery. We offer free shipping within the United States. For international orders, shipping fees may apply and will be calculated at checkout. Please note that any taxes or customs fees imposed by the destination country will be the responsibility of the customer.

FAQ:

Q: What is the brand name of this outdoor power cabinet?

A: The brand name of this outdoor power cabinet is dixin.

Q: What is the model number of this outdoor power cabinet?

A: The model number of this outdoor power cabinet is ODC-210909C2T.

Q: Has this outdoor power cabinet been certified?

A: Yes, this outdoor power cabinet has been certified with CE.

Q: Where is the place of origin for this outdoor power cabinet?

A: The place of origin for this outdoor power cabinet is SHENZHEN.

Q: What is the minimum order quantity for this outdoor power cabinet?

A: The minimum order quantity for this outdoor power cabinet is 10.

Q: What is the price for this outdoor power cabinet?

A: The price for this outdoor power cabinet is 1900.

Q: What are the packaging details for this outdoor power cabinet?

A: The packaging details for this outdoor power cabinet are wooden crate/cardboard box.

Q: What are the payment terms for this outdoor power cabinet?

A: The payment terms for this outdoor power cabinet are t/t.

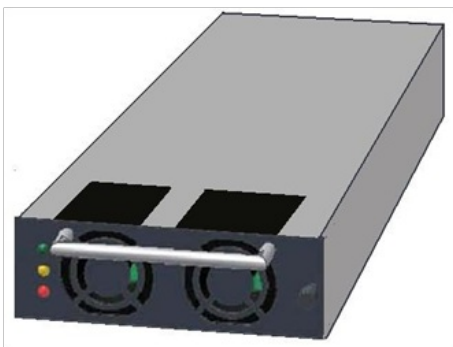
Q: What is the supply ability for this outdoor power cabinet?

A: The supply ability for this outdoor power cabinet is 10000Taiwan/month.

Q: What is the delivery time for this outdoor power cabinet?

A: The delivery time for this outdoor power cabinet is 30day.





Main equipment for cabinet processing (Three main equipment)



Laser

- 1500W: 1tower
- 3000W: 2tower



TRUMATIC500- Fully Automatic

- Fast data punching: 4 units with automatic loading and unloading



TRUMATIC500- Fully Automatic
Japan AMADA - Fully Automatic

- Japan AMADA: 7 units with automatic loading and unloading
- Model: EM-2510NT/AC-2510NT

Key process - general punching, bending, and riveting workshop



- Japan AMADA: 25 units
- Model: RG-35S



- TOX riveting machine: 24 units



- Puchong: 5 units (160T+250T+300T)



Key Process - Copper and Aluminum Product Workshop (Integrated Cutting and Punching Machine)



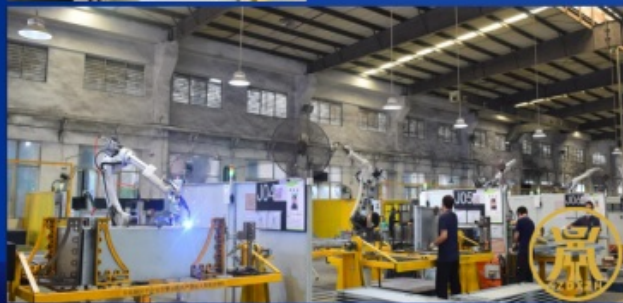
- Copper bar integrated machine: 2 units
- Model: LID-30
- Features: high-precision automatic cutting and punching



Key Process - Welding Workshop

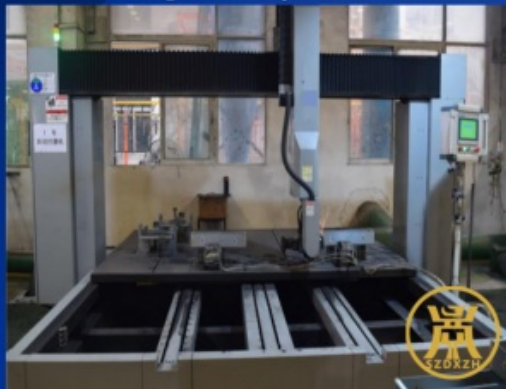


Fully automatic, 360 degree rotating welding line features: Welding accuracy: Welding displacement less than 1.5 mm, welding flip angle less than 0.1 degrees. Welding software: Our self-developed welding control software v1.3 version can store up to 128 welding programs. Scan the product code to initiate the welding program, automatically switch between dual platforms, seamlessly connect, and achieve uninterrupted welding. Welding dimensions: Product height 2.8 meters, width 1.5 meters. Welding capacity: 11 fully automatic welding robots and 47 welders. Monthly output of 20000 to 25000 cabinets.



Key Process - Polishing Workshop

- Automatic polishing machine: 2 units, equipment can be increased according to product demand.
- Manual polishing stations: 15, with manpower allocated according to the product structure.



Key Process - Metal Surface Treatment (Fully Automated)

Surface treatment line 1 (parts category)



Surface treatment 2-wire (cabinet type)

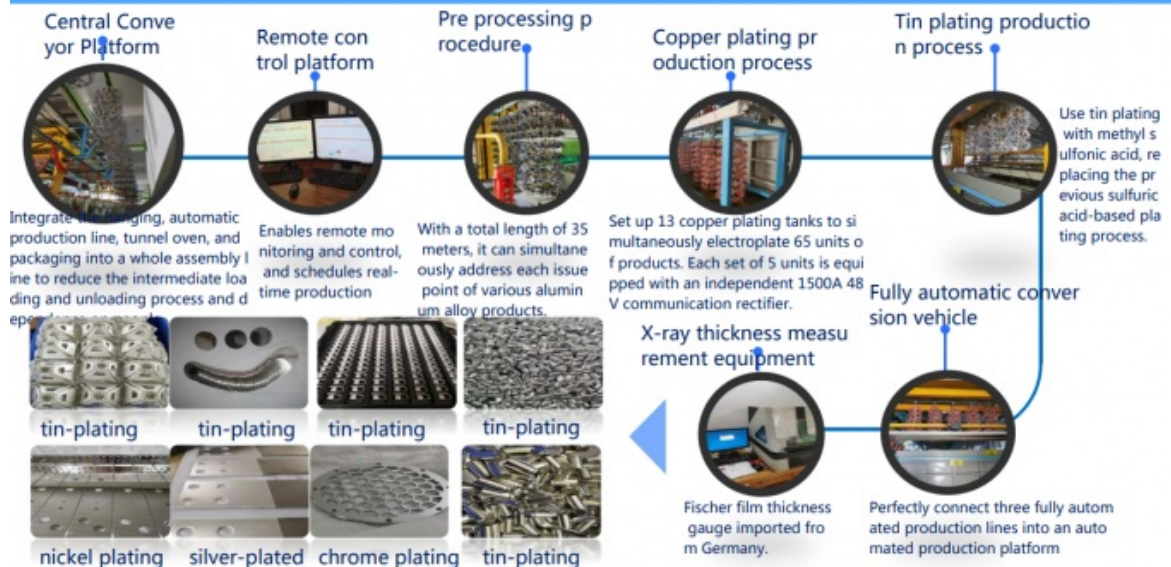


Surface treatment 2-wire (cabinet type):

- Full-process foolproofing: Unmanned operation, the system automatically performs surface treatment according to predefined process paths based on different materials, eliminating quality risks caused by human errors.
- Continuous monitoring: The system continuously monitors the pH level of the solution and automatically initiates the addition of the solution based on the monitoring results.
- Monthly capacity: Over 20,000 large cabinets



Key process - Metal parts electroplating workshop (automated assembly line)



Key process - Spray painting workshop (3 main lines+1 auxiliary line/small batch)

Reciprocating machine (automatic powder spraying)



Automatic Line 1



Characteristics of Spray Line:

- ◆ Characteristics of Spray Line: The system monitors the furnace temperature in real-time, and when the oven temperature does not meet the standard, the system monitors the furnace temperature in real-time, and when the oven temperature does not meet the standard.
- ◆ Automatic spraying: Reciprocating machine automatic spraying ensures uniform thickness and aesthetic appearance of the coating.
- ◆ Equipment resources: 3 main lines+1 auxiliary line, which can simultaneously meet the needs of different colors.
- ◆ Daily production capacity: 15,000 to 20,000 square meters per day



Automatic Line 2



Automatic Line 3

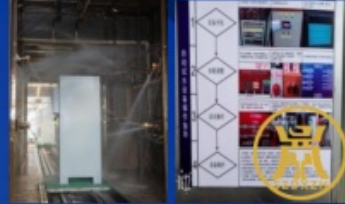
Key Process - Product Assembly Workshop



Large cabinet assembly line



Small cabinet with assembly line



IPX6 Spray Water Testing System



Small chassis wiring assembly line



Outdoor cabinet product assembly line



High voltage product assembly line



Shenzhen Daxin Intelligent Equipment Technology Co., Ltd

Shenzhen Daxin Intelligent Equipment Technology Co., Ltd



+86 15817363697



lubenzhi@szdxzh.com



power-cabinets.com

Green Base Industrial Park, Longtian Street, Pingshan District, Shenzhen