



AC- DC Communication Power Supply 48V DC 19 inch Rack mount Power Supply

Our Product Introduction

for more products please visit us on power-cabinets.com

Basic Information

- Place of Origin: shenzhen
- Brand Name: daxin
- Certification: CE,UL
- Model Number: DX-T-90A
- Minimum Order Quantity: 10
- Packaging Details: Wooden pallet+cardboard box
- Payment Terms: L/C,T/T
- Supply Ability: 10000pcs/month



Product Specification

- Temperature Range: -40°C To 55°C
- Input Voltage: 100-240V
- Mount Way: 19-inch Mount
- Output Load: Customized
- Embedded Power Supply: Brand: Daxin
- Humidity Range: 10% To 95%
- Cabinet Layout: One Compartment
- Installation Method: Rack Mounted
- Mtp Connector RI: $\geq 60\text{dB}$
- Internal Dimension: W×D×H 482.3×380×44mm
- Highlight: AC- DC Communication Power Supply,
48V DC Communication Power Supply,
19 Inch Communication Power Supply



More Images



Product Description

AC-DC Communication Power Supply 48V DC 19 inch Rack mount Power Supply

Product Specifications

Attribute	Value
Temperature Range	-40°C to 55°C
Input Voltage	100-240V
Mount Way	19-inch mount
Output load	Customized
Embedded Power Supply	Brand: daxin
Humidity Range	10% to 95%
Cabinet Layout	one compartment
Installation Method	rack mounted
Mtp Connector RI	≥60dB
Internal Dimension	W×D×H 482.3×380×44mm

Product Overview

AC-DC Power Supply/Communication Power Supply/Rack Power Supply/48V DC Power Supply

VCS AC/DC Power System



VCS1U-4860A



VCS2U-4890



VCS3U-4890



VCS3U-48150

It is designed for inseting the 19", 21" rack. The system consists of VSM-B/C control module, VRM48 rectifier module, and etc. And there is AC-DC distribution unit. It's capacity can reach 48V/10A~150A combining racks with rectifiers.

Key Features

It can be put in a rack with other telecom equipments

High efficiency, high power factor

Wide input voltage range, high adaptability to electric network

Good electromagnetic compatibility

With lightning arrester in input and output, have good lightning protection

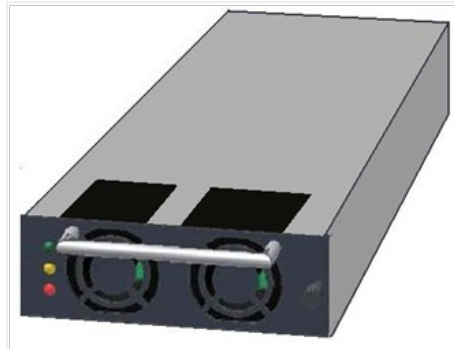
With RS485/RJ45 interface, easy to connect with any advanced intelligent centralized monitoring system

Have the abandon battery management functions about battery protection, Low voltage battery disconnection (LVBD), temperature compensation

Parallel redundant system, with high reliability

With Chinese and English interface, it's easy to operate.

Technical Specifications



Model	VCS1U-4860	VCS2U-4890	VCS3U-4890	VCS3U-48150
Input				
Rated voltage	Single phase 220Vac			
Operation voltage range	90~300Vac			
Current(Max)	23A	34.5A	34.5A	57.5A
Frequency	50/60Hz±10%			
Power factor	≥0.99			
Output				
Voltage	48V(40~58Vdc adjustable)			
Current	10-60A	10-90A	10-90A	10-150A
Power(Max)	3480W	5220W	5220W	8700W
Current sharing at paralleling	≤±3%			
Voltage stability precision	≤±0.6%			
Efficiency	≥91%			
Other data				
Dimension(W*D*H) (mm)	482×253×44	482×253×88	482×253×132	482×253×132
Weight	8kg	11kg	12kg	15kg
Battery Input	32A*1	80A*1	63A*2	63A*2
Load Output	32A*1	30A*2, 10A*2	63A*3 20A*3 16A*2 10A*2	63A*2 32A*2 16A*1

VRM Rectifier Specifications

Model	VRM4810	VRM4815	VRM4820	VRM4830
Input				
Rated voltage	Single phase 220Vac			
Operation voltage range	90~300Vac			
Current	≤3.8A	≤5.7A	≤7.6A	≤11.5A
Frequency	50/60Hz±10%			
Power factor	≥0.99			
Output				
Voltage	48V(40~58Vdc adjustable)			
Current(@58V)	10A	15A	20A	30A
Current sharing at paralleling	≤±3%			
Voltage stability precision	≤±0.6%			
Protection				
Protection features	Over voltage, over current, output short-circuit and over temperature			
Other data				
Efficiency	≥91%			
Cooling mode	Fan cooling			
Operating temperature	-10~+55			
Degree of protection class	IP20			
Ripple voltage	≤200mVpp			
Phosphometric noise	≤2mVrms			
Load effect	≤±0.5%			
Restoring time of load effect	≤200μs			
Source effect	≤±0.1%			
Dimension (mm)	116.5(W) ×208(D) ×41.6(H)			
Weight	1.5kg			
EMC				
Emission	Ac input in accordance with EN50081-1 and EN50081-2; DC output in accordance with EN50081-2			
Immunity	In accordance with EN50081-1, EN50081-2			
Safety	In accordance with IEC950, EN60950, EN41003, UL1950, AS/NZ3260			

Because we have many combinations of 48V DC power supply, you can ask our business staff what kind of configuration

you need. We have 1U power supply/2U Power Supply/3U power supply/5U power supply/6U power supply, and communication cabinet. There must be a device to meet your on-site installation and use of equipment needs.

Product Images





SZDXZH
深圳大新智慧



Shenzhen Daxin Intelligent Equipment Technology Co., Ltd



+86 15817363697



lubenzhi@szdxzh.com



power-cabinets.com

Green Base Industrial Park, Longtian Street, Pingshan District, Shenzhen