

## 48V/10A-150A Embedded Communication Power Supply by Daxin with Outdoor Powder Coating

Our Product Introduction

for more products please visit us on [power-cabinets.com](http://power-cabinets.com)

### Basic Information

- Place of Origin: shenzhen
- Brand Name: daxin
- Certification: CE,UL
- Model Number: DX-C-1k20AH
- Minimum Order Quantity: 10
- Packaging Details: Wooden pallet+cardboard box
- Payment Terms: L/C, T/T
- Supply Ability: 10000pcs/month



### Product Specification

- Cabinet Layout: One Compartment
- Mount Way: 19-inch Mount
- Product Name: AC-DC Power Supply/communication Power Supply/rack Power Supply/48V DC Power Supply
- Input Voltage: 100-240V
- Installation Method: Floor Installed
- Capacity: 48V/10A~150A
- Mtp Connector RI:  $\geq 60\text{dB}$
- Surface: Outdoor Powder Coating
- Highlight: 48v dc cabinet power supply,  
48v dc communication power supply



## Product Description

### Product Description:

The power supply features an Mtp Connector RI of  $\geq 60\text{dB}$ , which ensures that the power supply delivers clean and consistent power to your devices. This is particularly important for communication equipment, which requires stable power to function properly.

The embedded power supply brand of this product is Daxin, a well-known and respected brand in the industry. Daxin is known for producing high-quality power supplies that are reliable and efficient.

The Communication Power Supply is designed for easy installation and is compatible with 19-inch mount systems. It can be easily installed on the floor, making it an ideal choice for data centers and other environments where space is at a premium.

In addition to its high-quality construction and reliable performance, the Communication Power Supply is also versatile and can be used for a variety of applications. It is an ideal choice for high voltage power supply, ATM power supply, and high voltage DC power supply applications.

Overall, the Communication Power Supply is an excellent choice for anyone who needs a reliable and efficient power supply for their communication equipment. Whether you are setting up a new data center or upgrading your existing equipment, this power supply is sure to meet your needs and exceed your expectations.

### Features:

Product Name: AC-DC power supply/communication power supply/rack power supply/48V DC power supply

Humidity Range: 10% To 95%

Embedded Power Supply Brand: Daxin

Input Voltage: 100-240V

Installation Method: Floor Installed

Features:

Instrument Power Supply

ATM Power Supply

Industrial PC Power Supply

### Technical Parameters:

Product Name:	AC-DC power supply/communication power supply/rack power supply/48V DC power supply
Product Category:	Communication Power Supply
Embedded Power Supply Brand:	Daxin
Input Voltage:	100-240V
Capacity:	48V/10A~150A
Temperature Range:	-40°C To 55°C
Humidity Range:	10% To 95%
Surface:	Outdoor Powder Coating
Internal Dimension:	W×D×H 482.3×380×44mm
MTP Connector RL:	$\geq 60\text{dB}$

### Applications:

The DX-C-1k20AH communication power supply by Daxin is a high voltage power supply suitable for a wide range of industrial and commercial applications. With CE and UL certifications, this power supply is safe and reliable for use in various scenarios.

This industrial PC power supply is designed to provide stable and reliable power to communication and networking equipment. It can be used in environments with varying temperatures and humidity levels, making it suitable for outdoor use. The outdoor powder coating ensures protection against harsh weather conditions, ensuring a long lifespan of the product.

The DX-C-1k20AH is ideal for providing power to ATMs, ensuring continuous operation and preventing downtime. It is also suitable for use in other banking and financial institutions, ensuring uninterrupted service for customers.

The power supply is easy to install, with a 19-inch mount that can be floor installed. Its embedded power supply brand, Daxin, ensures high performance and reliability. The MTP connector RL of  $\geq 60\text{dB}$  ensures high-quality audio and video transmission, making it ideal for use in telecommunication equipment.

The DX-C-1k20AH communication power supply has a minimum order quantity of 10 units and a price of \$2850. The payment terms include L/C and T/T, and the supply ability is 5000 units. The packaging details include a wooden pallet and cardboard box, ensuring safe transportation of the product to your desired location.

In conclusion, the DX-C-1k20AH communication power supply by Daxin is a reliable and efficient power supply suitable for a wide range of applications. Its certifications, high-quality performance, and easy installation make it an ideal choice for industrial and commercial use.

## Support and Services:

Our Communication Power Supply product is designed to provide reliable, high-performance power for communication equipment. Our technical support team is available to help troubleshoot any issues you may encounter with the product and to provide guidance on proper installation and maintenance.

We also offer a range of services to ensure that your Communication Power Supply operates at peak performance. These services include preventive maintenance, repair and replacement of components, and on-site support if necessary.

Our goal is to ensure that your communication equipment stays up and running with minimal downtime, and our technical support and services are an important part of achieving that goal.

## Packing and Shipping:

### Product Packaging:

Communication Power Supply

Instruction Manual

Power Cable

### Shipping:

Shipping Carrier: UPS

Estimated Delivery Time: 3-5 business days

Shipping Cost: \$15.00

## FAQ:

Q: What is the brand name of the communication power supply?

A: The brand name of the communication power supply is daxin.

Q: What is the model number of the communication power supply?

A: The model number of the communication power supply is DX-C-1k20AH.

Q: What certifications does the communication power supply have?

A: The communication power supply is certified with CE and UL.

Q: Where is the communication power supply manufactured?

A: The communication power supply is manufactured in Shenzhen.

Q: What is the minimum order quantity for the communication power supply?

A: The minimum order quantity for the communication power supply is 10.

Q: What is the price of the communication power supply?

A: The price of the communication power supply is 2850.

Q: What are the payment terms for the communication power supply?

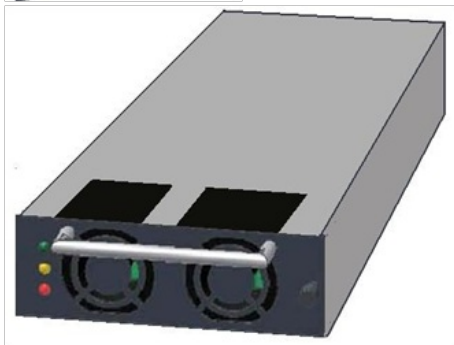
A: The payment terms for the communication power supply are L/C and T/T.

Q: What is the supply ability for the communication power supply?

A: The supply ability for the communication power supply is 5000.

Q: What are the packaging details for the communication power supply?

A: The packaging details for the communication power supply are wooden pallet+cardboard box.



## Main equipment for cabinet processing (Three main equipment)



Laser

- 1500W: 1tower
- 3000W: 2tower



TRUMATIC500- Fully Automatic

- Fast data punching: 4 units with automatic loading and unloading



TRUMATIC500- Fully Automatic  
Japan AMADA - Fully Automatic

- Japan AMADA: 7 units with automatic loading and unloading
- Model: EM-2510NT/AC-2510NT

## Key process - general punching, bending, and riveting workshop



- Japan AMADA: 25 units
- Model: RG-35S



- TOX riveting machine: 24 units



- Puchong: 5 units (160T+250T+300T)



## Key Process - Copper and Aluminum Product Workshop (Integrated Cutting and Punching Machine)



- Copper bar integrated machine: 2 units
- Model: LID-30
- Features: high-precision automatic cutting and punching





## Key Process - Welding Workshop

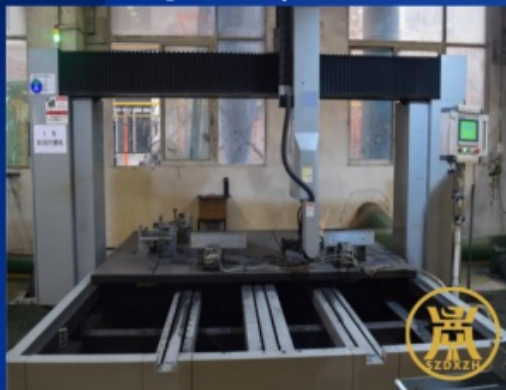


Fully automatic, 360 degree rotating welding line features: Welding accuracy: Welding displacement less than 1.5 mm, welding flip angle less than 0.1 degrees. Welding software: Our self-developed welding control software v1.3 version can store up to 128 welding programs. Scan the product code to initiate the welding program, automatically switch between dual platforms, seamlessly connect, and achieve uninterrupted welding. Welding dimensions: Product height 2.8 meters, width 1.5 meters. Welding capacity: 11 fully automatic welding robots and 47 welders. Monthly output of 20000 to 25000 cabinets.



## Key Process - Polishing Workshop

- Automatic polishing machine: 2 units, equipment can be increased according to product demand.
- Manual polishing stations: 15, with manpower allocated according to the product structure.



## Key process - Metal parts electroplating workshop (automated assembly line)





## Key process - Spray painting workshop (3 main lines+1 auxiliary line/small batch)

Reciprocating machine (auto  
matic powder spraying)



Automatic Line 1



### Characteristics of Spray Line:

- ◆ Characteristics of Spray Line: The system monitors the furnace temperature in real-time, and when the oven temperature does not meet the standard The system monitors the furnace temperature in real-time, and when the oven temperature does not meet the standard
- ◆ Automatic spraying: Reciprocating machine automatic spraying ensures uniform thickness and aesthetic appearance of the coating.
- ◆ Equipment resources: 3 main lines+1 auxiliary line, which can simultaneously meet the needs of different colors;
- ◆ Daily production capacity: 15,000 to 20,000 square meters per day



Automatic Line 2



Automatic Line 3

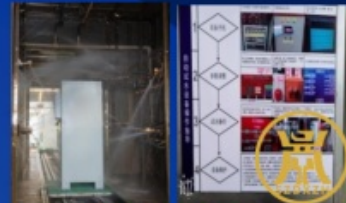
## Key Process - Product Assembly Workshop



Large cabinet assembly line



Small cabinet with assembly line



IPX6 Spray Water Testing System



Small chassis wiring assembly line



Outdoor cabinet product assembly line



High voltage product assembly line

## Key process - outdoor cabinet waterproof testing assembly line

- Pipeline standard: IPX1-IPX5 waterproof rating, which can be adjusted and matched according to product requirements.



Trial water process diagram



Test water





+86 15817363697



lubenzhi@szdxzh.com



power-cabinets.com

Green Base Industrial Park, Longtian Street, Pingshan District, Shenzhen