

Outdoor Powder Coating Communication Power Supply

Basic Information

- Place of Origin: shenzhen
- Brand Name: daxin
- Certification: CE,UL
- Model Number: DX-C-1k20AH
- Minimum Order Quantity: 10
- Packaging Details: Wooden pallet+cardboard box
- Payment Terms: L/C, T/T
- Supply Ability: 10000pcs/month



Product Specification

- Features: Wireless Power Supply Unit, Telecom Power Module, Digital Communication Power Adapter
- Installation Method: Floor Installed
- Applications: Industrial PC Power Supply, Satellite Communication, Broadband Power Distribution Unit
- Certifications: CE And UL
- Internal Dimension: W×D×H 482.3×380×44mm
- Temperature Range: -40°C To 55°C
- Industrial PC Power Supply: Yes
- Product Name: One Compartment Cabinet Layout
Communication Network Supply For Outdoor
Powder Coating



Product Description

Product Description:

The internal dimension of the Communication Power Supply is W×D×H 482.3×380×44mm which is ideal for fitting various types of transmission power adapters, network power devices, and speech supply sources. This dimension ensures that the power supply is easy to install and can fit in various settings with ease.

This product is designed with an outdoor powder coating surface that is durable and can withstand harsh weather conditions. The outdoor powder coating ensures that the power supply is protected from rust and corrosion, making it an ideal choice for outdoor installations.

For added convenience, the Communication Power Supply comes packaged with wooden pallet and cardboard box, ensuring that the product is well protected during shipping and handling. This packaging is designed to ensure that the product arrives at the customer's location in excellent condition.

We offer flexible payment terms for the Communication Power Supply product, including L/C and T/T. Our payment terms are designed to ensure that our customers have a seamless buying experience and can choose the payment option that suits them best.

Overall, our Communication Power Supply product is a top-quality and reliable power source that is ideal for various applications in different settings. With its durable outdoor powder coating surface, flexible payment terms, and easy installation, this product is an excellent choice for anyone looking for a reliable power source for their equipment.

Features:

Product Name: One Compartment Cabinet Layout Communication Network Supply for Outdoor Powder Coating

Installation Method: Floor Installed

Price: \$2850

Minimum Order Quantity: 10 units

Manufacturing Location: Shenzhen

Features:

Communication power supply

Network power device

Telecommunication energy supply

Technical Parameters:

Supply Ability:	5000 units
Input Voltage:	100-240V
Technical Support and Services:	Installation and setup assistance, troubleshooting and problem-solving, repair and maintenance services, product upgrades and updates, warranty and out-of-warranty support
Manufacturing Location:	Shenzhen
Capacity:	48V/10A~150A
Industrial PC Power Supply:	Yes
Product Name:	One Compartment Cabinet Layout Communication Network Supply for Outdoor Powder Coating
Installation Method:	Floor Installed
Internal Dimension:	W×D×H 482.3×380×44mm
FAQ:	Brand name: Daxin, Model number: DX-C-1k20AH

This table reflects technical parameters for the Communication Power Supply, also known as the speech supply source or network power device.

Applications:

The DX-C-1k20AH communication power supply, manufactured by the reputable brand Daxin, is a reliable and high-quality power source suitable for various communication networks and devices.

With its CE and UL certifications, this power supply can be trusted to provide safe and stable power to your network devices, including routers, switches, servers, and more. This makes it an ideal choice for small to medium-sized businesses that rely on a stable network connection to operate effectively.

In addition to its use as a network power device, the DX-C-1k20AH can also be used as a radioing energy device, providing power to radio communication devices such as walkie-talkies. It can also be used as a speech supply source for public address systems, making it a versatile and multifunctional power supply.

The power supply is designed to be installed on the floor, making it easy to integrate into your existing network setup. Its embedded power supply brand Daxin ensures that you are getting a high-quality product that is built to last.

The DX-C-1k20AH is available for purchase with a minimum order quantity of 10, and has a price of \$2850. It can be purchased using L/C or T/T payment terms, and has a supply ability of up to 5000 units. The product will be shipped in a secure and sturdy wooden pallet+cardboard box packaging, ensuring that it arrives at your doorstep in pristine condition. Whether you need a reliable power source for your network devices, radio communication devices, or public address systems, the DX-C-1k20AH communication power supply from Daxin is the perfect choice. Order yours today and experience the benefits of a high-quality power supply.

Support and Services:

The Communication Power Supply product comes with comprehensive technical support and services to ensure that your power supply operates at its best. Our team of experienced engineers can provide assistance with installation, configuration, and troubleshooting of the product. Additionally, we offer a range of value-added services including maintenance, repair, and upgrades to keep your power supply up to date with the latest technology. Our goal is to provide you with reliable, efficient power solutions that meet your specific needs and exceed your expectations.

Packing and Shipping:

Product Packaging:

The Communication Power Supply will be packed in a sturdy cardboard box with foam padding to ensure safe transportation. The product will be wrapped in protective plastic to prevent any damage during shipping.

Shipping Information:

The Communication Power Supply will be shipped via standard ground shipping within the continental United States. Shipping costs will be calculated at checkout and vary based on the shipping destination. Orders will be processed within 1-2 business days and shipping times will vary based on the destination. Customers will receive a tracking number via email once the order has shipped.

FAQ:

Q1: What is the brand name of this Communication Power Supply?

A1: The brand name of this Communication Power Supply is daxin.

Q2: What is the model number of this Communication Power Supply?

A2: The model number of this Communication Power Supply is DX-C-1k20AH.

Q3: What certifications does this Communication Power Supply have?

A3: This Communication Power Supply has CE and UL certifications.

Q4: Where is this Communication Power Supply manufactured?

A4: This Communication Power Supply is manufactured in Shenzhen.

Q5: What are the payment terms for purchasing this Communication Power Supply?

A5: The payment terms for purchasing this Communication Power Supply are L/C and T/T.

Q6: What is the minimum order quantity for this Communication Power Supply?

A6: The minimum order quantity for this Communication Power Supply is 10.

Q7: What is the price of this Communication Power Supply?

A7: The price of this Communication Power Supply is \$2850.

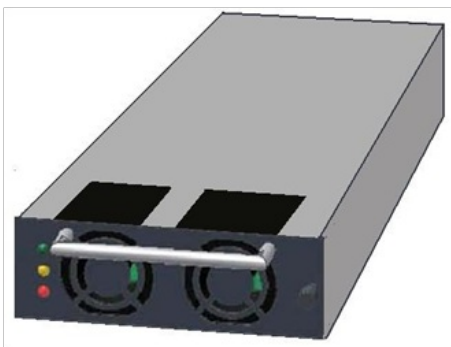
Q8: What is the supply ability of this Communication Power Supply?

A8: The supply ability of this Communication Power Supply is 5000.

Q9: What are the packaging details of this Communication Power Supply?

A9: The packaging details of this Communication Power Supply are wooden pallet+cardboard box.





Main equipment for cabinet processing (Three main equipment)



Laser

- 1500W: 1tower
- 3000W: 2tower



TRUMATIC500- Fully Automatic

- Fast data punching: 4 units with automatic loading and unloading



TRUMATIC500- Fully Automatic
Japan AMADA - Fully Automatic

- Japan AMADA: 7 units with automatic loading and unloading
- Model: EM-2510NT/AC-2510NT

Key process - general punching, bending, and riveting workshop



- Japan AMADA: 25 units
- Model: RG-35S



- TOX riveting machine: 24 units



- Puchong: 5 units (160T+250T+300T)



Key Process - Copper and Aluminum Product Workshop (Integrated Cutting and Punching Machine)



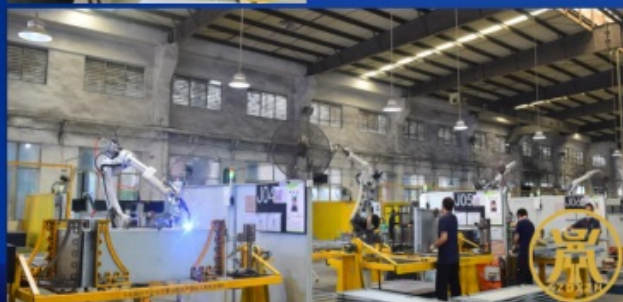
- Copper bar integrated machine: 2 units
- Model: LID-30
- Features: high-precision automatic cutting and punching



Key Process - Welding Workshop

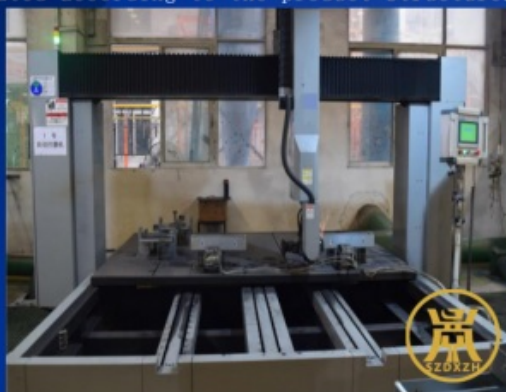


Fully automatic, 360 degree rotating welding line features: Welding accuracy: Welding displacement less than 1.5 mm, welding flip angle less than 0.1 degrees. Welding software: Our self-developed welding control software v1.3 version can store up to 128 welding programs. Scan the product code to initiate the welding program, automatically switch between dual platforms, seamlessly connect, and achieve uninterrupted welding. Welding dimensions: Product height 2.8 meters, width 1.5 meters. Welding capacity: 11 fully automatic welding robots and 47 welders. Monthly output of 20000 to 25000 cabinets.



Key Process - Polishing Workshop

- Automatic polishing machine: 2 units, equipment can be increased according to product demand.
- Manual polishing stations: 15, with manpower allocated according to the product structure.



Key process - Metal parts electroplating workshop (automated assembly line)



Key process - Spray painting workshop (3 main lines+1 auxiliary line/small batch)

Reciprocating machine (automatic powder spraying)



Automatic Line 1



Characteristics of Spray Line:

- ◆ **Characteristics of Spray Line:** The system monitors the furnace temperature in real-time, and when the oven temperature does not meet the standard, the system monitors the furnace temperature in real-time, and when the oven temperature does not meet the standard.
- ◆ **Automatic spraying:** Reciprocating machine automatic spraying ensures uniform thickness and aesthetic appearance of the coating.
- ◆ **Equipment resources:** 3 main lines+1 auxiliary line, which can simultaneously meet the needs of different colors.
- ◆ **Daily production capacity:** 15,000 to 20,000 square meters per day.



Automatic Line 2



Automatic Line 3

Key Process - Product Assembly Workshop



Large cabinet assembly line



Small cabinet with assembly line



IPX6 Spray Water Testing System



Small chassis wiring assembly line



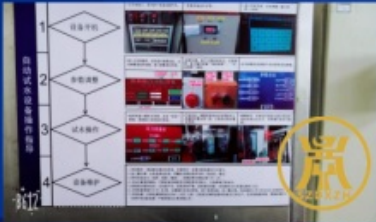
Outdoor cabinet product assembly line



High voltage product assembly line

Key process - outdoor cabinet waterproof testing assembly line

■ Pipeline standard: IPX1-IPX5 waterproof rating, which can be adjusted and matched according to product requirements.



Trial water process diagram

Test water



Shenzhen Daxin Intelligent Equipment Technology Co., Ltd

+86 15817363697

lubenzhi@szdxzh.com

power-cabinets.com

Green Base Industrial Park, Longtian Street, Pingshan District, Shenzhen