



Integrated photovoltaic power supply Internal Dimension Communications Power Supply with Mtp Connector RI≥60dB

Our Product Introduction

for more products please visit us on power-cabinets.com

Basic Information

- Place of Origin: shenzhen
- Brand Name: daxin
- Certification: CE,UL
- Model Number: DX-AC220/DC110V-DC48V
- Minimum Order Quantity: 10
- Packaging Details: Wooden pallet+cardboard box
- Payment Terms: L/C, T/T
- Supply Ability: 10000pcs/month



Product Specification

- ATM Power Supply: Yes
- Product Name: 48V/10A-150A Embedded Communication Power Supply By Daxin With Outdoor Powder Coating
- Temperature Range: -40°C To 55°C
- Instrument Power Supply: Yes
- Capacity: 48V/10A~150A
- Internal Dimension: W×D×H 482.3×380×44mm
- Mount Way: 19-inch Mount
- Installation Method: Floor Installed



More Images



Product Description:

This communication power supply has an input voltage range of 100-240V, making it suitable for use in a variety of locations. Its floor installation method ensures that it remains securely in place, even in high traffic areas.

The Daxin Communication Power Supply is highly efficient, with a low power consumption rate that helps to reduce electricity costs. It also boasts a high power factor and low electromagnetic interference, ensuring that your equipment runs smoothly and without interruption.

With a compact design and easy-to-use interface, this communication power supply is a great choice for those who need reliable and efficient power for their network equipment. Whether you are setting up a new system or upgrading an existing one, the Daxin Communication Power Supply is sure to meet your needs.

Features:

Product Name: 48V/10A-150A Embedded Communication Power Supply by Daxin with Outdoor Powder Coating

Product Category: Communication Power Supply

Capacity: 48V/10A~150A

Humidity Range: 10% To 95%

Industrial PC Power Supply: Yes

Mobile Network Power Source

Digital Communication Power Adapter

Satellite Communication Power System

Technical Parameters:

Product Name:	48V/10A-150A Embedded Communication Power Supply by Daxin with Outdoor Powder Coating
Product Category:	Communication Power Supply
Capacity:	48V/10A~200A
Industrial PC Power Supply:	Yes
Mount Way:	19-inch Mount
Embedded Power Supply Brand:	Daxin
ATM Power Supply:	Yes
Input Voltage:	100-240V
Humidity Range:	10% To 95%
Cabinet Layout:	One Compartment

Applications:

Manufactured in Shenzhen, the product has a minimum order quantity of 10 and is priced at \$2850. The payment terms include L/C and T/T, and Daxin has a supply ability of 5000 units. The packaging details include a wooden pallet and cardboard box, ensuring safe transportation of the product.

The temperature range of the product is -40°C to 55°C, making it suitable for use in extreme weather conditions. The humidity range of the product is 10% to 95%, ensuring reliable performance even in high humidity areas.

The 48V/10A-150A Embedded Communication Power Supply is an industrial PC power supply that can be used for various applications in the telecommunication industry. The product is designed to provide a stable power supply for the telecom power module, telecommunication adapter, and communication network supply.

The product is equipped with a one-compartment cabinet layout, making it easy to install and maintain. The outdoor powder coating ensures the product's durability, making it suitable for outdoor use.

Support and Services:

The Communication Power Supply product comes with various technical support and services, such as:

24/7 customer support through phone, email, and online chat

Technical documentation and manuals for installation and troubleshooting

On-site installation and maintenance services

Product training and certification programs for technicians and engineers

Remote monitoring and diagnostic services for proactive maintenance and issue resolution

Product customization and engineering services to meet specific requirements

Our technical support and services are designed to ensure efficient and reliable operation of the Communication Power Supply product, and to minimize downtime and disruptions for our customers.

Packing and Shipping:

Product Packaging:

Communication Power Supply

Power cord

User manual

Warranty card

Shipping:

Shipping method: Standard

Estimated delivery time: 3-5 business days

Shipping cost: Free

Tracking number: Provided

FAQ:

FAQs for daxin Communication Power Supply

Q: What is the model number of the daxin Communication Power Supply?

A: The model number of the daxin Communication Power Supply is DX-C-1k20AH.

Q: What certifications does the daxin Communication Power Supply have?

A: The daxin Communication Power Supply has CE and UL certifications.

Q: What is the place of origin for the daxin Communication Power Supply?

A: The daxin Communication Power Supply is made in shenzhen.

Q: What is the minimum order quantity for the daxin Communication Power Supply?

A: The minimum order quantity for the daxin Communication Power Supply is 10 units.

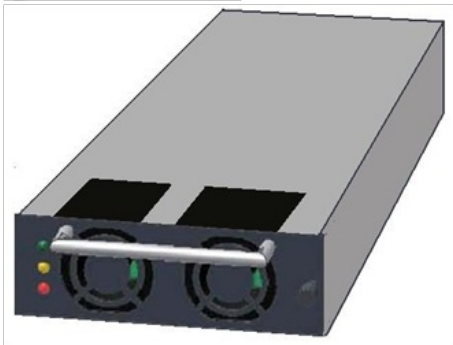
Q: What is the price of the daxin Communication Power Supply?

A: The price of the daxin Communication Power Supply is \$2850.

Payment terms: L/C, T/T

Supply ability: 5000 units

Packaging details: Wooden pallet+cardboard box



Main equipment for cabinet processing (Three main equipment)



Laser

- 1500W: 1tower
- 3000W: 2tower



TRUMATIC500- Fully Automatic

- Fast data punching: 4 units with automatic loading and unloading



TRUMATIC500- Fully Automatic Japan AMADA - Fully Automatic

- Japan AMADA: 7 units with automatic loading and unloading
- Model: EM-2510NT/AC-2510NT

Key process - general punching, bending, and riveting workshop



- Japan AMADA: 25 units
- Model: RG-35S



- TOX riveting machine: 24 units



- Puchong: 5 units (160T+250T+300T)



Key Process - Copper and Aluminum Product Workshop (Integrated Cutting and Punching Machine)



- Copper bar integrated machine: 2 units
- Model: LID-30
- Features: high-precision automatic cutting and punching



Key Process - Welding Workshop

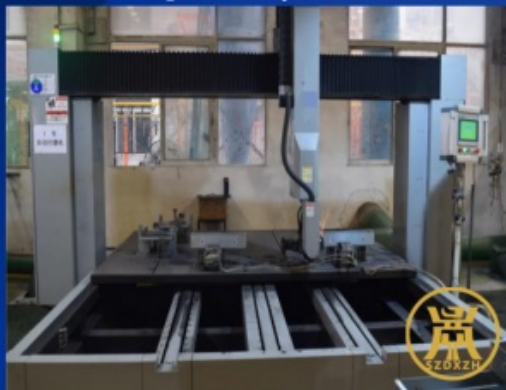


Fully automatic, 360 degree rotating welding line features: Welding accuracy: Welding displacement less than 1.5 mm, welding flip angle less than 0.1 degrees. Welding software: Our self-developed welding control software v1.3 version can store up to 128 welding programs. Scan the product code to initiate the welding program, automatically switch between dual platforms, seamlessly connect, and achieve uninterrupted welding. Welding dimensions: Product height 2.8 meters, width 1.5 meters. Welding capacity: 11 fully automatic welding robots and 47 welders. Monthly output of 20000 to 25000 cabinets.



Key Process - Polishing Workshop

- Automatic polishing machine: 2 units, equipment can be increased according to product demand.
- Manual polishing stations: 15, with manpower allocated according to the product structure.



Key process - Metal parts electroplating workshop (automated assembly line)



Key process - Spray painting workshop (3 main lines+1 auxiliary line/small batch)

Reciprocating machine (automatic powder spraying)



Automatic Line 1



Automatic Line 2



Automatic Line 3

Characteristics of Spray Line:

- ◆ Characteristics of Spray Line: The system monitors the furnace temperature in real-time, and when the oven temperature does not meet the standard The system monitors the furnace temperature in real-time, and when the oven temperature does not meet the standard
- ◆ Automatic spraying: Reciprocating machine automatic spraying ensures uniform thickness and aesthetic appearance of the coating.
- ◆ Equipment resources: 3 main lines+1 auxiliary line, which can simultaneously meet the needs of different colors;
- ◆ Daily production capacity: 15,000 to 20,000 square meters per day

Key Process - Product Assembly Workshop



Large cabinet assembly line



Small cabinet with assembly line



IPX6 Spray Water Testing System



Small chassis wiring assembly line



Outdoor cabinet product assembly line



High voltage product assembly line

Key process - outdoor cabinet waterproof testing assembly line

■ Pipeline standard: IPX1-IPX5 waterproof rating, which can be adjusted and matched according to product requirements.



Trial water process diagram



Test water





+86 15817363697



lubenzhi@szdxzh.com



power-cabinets.com

Green Base Industrial Park, Longtian Street, Pingshan District, Shenzhen