



CE Certified 220V Communication Power Supply for Industrial PC and ATM

Basic Information

- Place of Origin: shenzhen
- Brand Name: daxin
- Certification: CE,UL
- Model Number: DX-C-1k20AH
- Minimum Order Quantity: 10
- Packaging Details: Wooden pallet+cardboard box
- Payment Terms: L/C, T/T
- Supply Ability: 10000pcs/month



Product Specification

- Installation Method: Floor Installed
- Shipping: Free Within The United States, International Shipping Rates Apply, Ships Within 1-2 Business Days, Tracking Information Will Be Provided Via Email
- Applications: Telecommunication Adapter, Telecom Power Module, Broadband Power Distribution Unit
- Surface: Outdoor Powder Coating
- Cabinet Layout: One Compartment
- Product Packaging: 1 Communication Power Supply Unit, 1 Power Cord, 1 User Manual
- Highlight: **CE Certified Communication Power Supply, 220V Power Supply for Industrial PC**

Product Description:

This Communication Power Supply is ideal for use in telecommunications, networking, and other communication applications that require reliable and efficient power supply. The CEPS is designed to be compact and easy to install, with a 19-inch mount that makes it easy to integrate into existing communication systems. The internal dimensions of this power supply are WxDxH 482.3x380x44mm, making it suitable for use in various communication cabinets.

The cabinet layout of the Communication Power Supply is designed with one compartment, which simplifies installation and maintenance. The power supply is designed with advanced circuitry that ensures stable and reliable power output, even under heavy loads. The power supply also features intelligent power management functions that help to optimize power efficiency and reduce energy consumption. This Communication Power Supply is packaged with one power cord and one user manual, making it easy to install and operate. The user manual provides detailed instructions on how to install and operate the power supply, making it ideal for both novice and experienced users. The power supply is also backed by a comprehensive warranty, giving you peace of mind that you're investing in a high-quality product.

At a price of 2850, the Communicating Electrical Power Supply is an affordable and reliable power supply solution for various communication applications. Whether you're setting up a new communication system or upgrading an existing one, this power supply is an excellent choice. So why wait? Order your Communication Power Unit today and experience the benefits of reliable and efficient power supply!

Features:

Product Name: Communication Power Supply

Input Voltage: 100-240V

ATM Power Supply: Yes

Product Packaging:

1 Communication Power Supply unit

1 Power cord

1 User manual

Surface: Outdoor Powder Coating

Function: Power conversion module for monitoring cameras/communication/government units/factories

Technical Parameters:

Product Category	Communication Power Supply
Payment Terms	L/C, T/T
Mount Way	19-inch Mount
Cabinet Layout	One Compartment
Input Voltage	100-240V
Technical Support and Services	Troubleshooting, Repair and Replacement, Software Updates and Upgrades, Technical Consultation, Maintenance and Servicing
Internal Dimension	WxDxH 482.3x380x44mm
Minimum Order Quantity	10
Installation Method	Floor Installed
Packaging Details	Wooden Pallet+Cardboard Box

Applications:

The dacin DX-C-1k20AH Communication Power Supply is a high-quality power conversion module that is designed to provide reliable and efficient power to a variety of communication, government, and factory units. This product is certified with CE and UL and is manufactured in shenzhen. The minimum order quantity is 10 units and the price is \$2850. Payment terms include L/C and T/T and the supply ability is 5000 units. The packaging includes a wooden pallet and cardboard box, and the product includes a 1 Communication Power Supply unit, 1 Power cord, and 1 User manual.

The Communication Power Supply is designed for a variety of product application occasions and scenarios. The product is perfect for communication systems that require a stable and reliable power source. This includes monitoring cameras, communication systems, and government units. The Communicating Electrical Power System is designed to provide a consistent level of power that can help to ensure that these critical systems remain operational at all times. The Power conversion module can also be used in factories to power important machines and equipment.

The Communication Power Unit is mounted using a 19-inch Mount, making it easy to install and integrate into existing systems. The Mtp Connector RI is ≥60dB, which provides a high level of noise reduction and ensures that the power supply is clean and stable. The Capacity of the product ranges from 48V/10A~150A, providing a wide range of power options to meet the needs of various applications.

Support and Services:

Our Communication Power Supply product comes with technical support and services to ensure smooth operation and efficient performance. Our team of experts is available to provide guidance and assistance with installation, operation, and maintenance of the power supply. We also offer training programs to help you and your team get the most out of the product. In addition, we provide repair and replacement services to quickly resolve any issues that may arise. Our goal is to provide reliable and comprehensive support to ensure your power supply meets your communication needs.

Packing and Shipping:

Product Packaging:

1 Communication Power Supply unit

1 Power cord

1 User manual

Protective foam packaging

Shipping:

Ships within 1-2 business days

Shipping options available at checkout

Tracking information provided

International shipping available

FAQ:

Q: What is the brand name of this communication power supply?

A: The brand name of this communication power supply is daxin.

Q: What is the model number of this communication power supply?

A: The model number of this communication power supply is DX-C-1k20AH.

Q: What certifications does this communication power supply have?

A: This communication power supply is certified with CE and UL.

Q: Where is this communication power supply made?

A: This communication power supply is made in Shenzhen.

Q: What is the minimum order quantity for this communication power supply?

A: The minimum order quantity for this communication power supply is 10 units.

Q: What is the price of this communication power supply?

A: The price of this communication power supply is \$2850.

Q: What are the payment terms for this communication power supply?

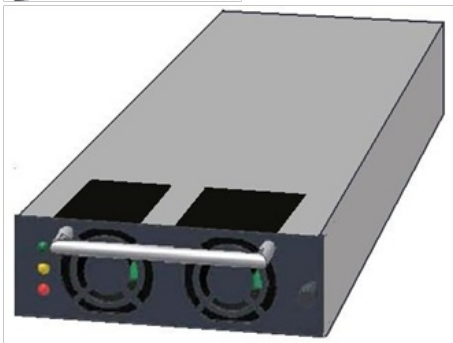
A: The payment terms for this communication power supply are L/C and T/T.

Q: What is the supply ability of this communication power supply?

A: The supply ability of this communication power supply is 5000 units.

Q: How is this communication power supply packaged?

A: This communication power supply is packaged in a wooden pallet and a cardboard box.



Main equipment for cabinet processing (Three main equipment)



Laser

- 1500W: 1tower
- 3000W: 2tower



TRUMATIC500- Fully Automatic

- Fast data punching: 4 units with automatic loading and unloading



TRUMATIC500- Fully Automatic
Japan AMADA - Fully Automatic

- Japan AMADA: 7 units with automatic loading and unloading
- Model: EM-2510NT/AC-2510NT

Key process - general punching, bending, and riveting workshop



- Japan AMADA: 25 units
- Model: RG-35S



- TOX riveting machine: 24 units



- Puchong: 5 units (160T+250T+300T)



Key Process - Copper and Aluminum Product Workshop (Integrated Cutting and Punching Machine)



- Copper bar integrated machine: 2 units
- Model: LID-30
- Features: high-precision automatic cutting and punching



Key Process - Welding Workshop

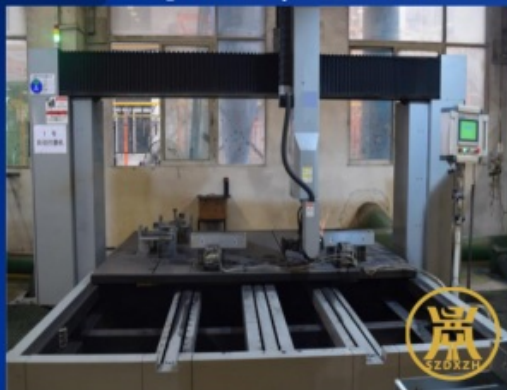


Fully automatic, 360 degree rotating welding line features: Welding accuracy: Welding displacement less than 1.5 mm, welding flip angle less than 0.1 degrees. Welding software: Our self-developed welding control software v1.3 version can store up to 128 welding programs. Scan the product code to initiate the welding program, automatically switch between dual platforms, seamlessly connect, and achieve uninterrupted welding. Welding dimensions: Product height 2.8 meters, width 1.5 meters. Welding capacity: 11 fully automatic welding robots and 47 welders. Monthly output of 20000 to 25000 cabinets.

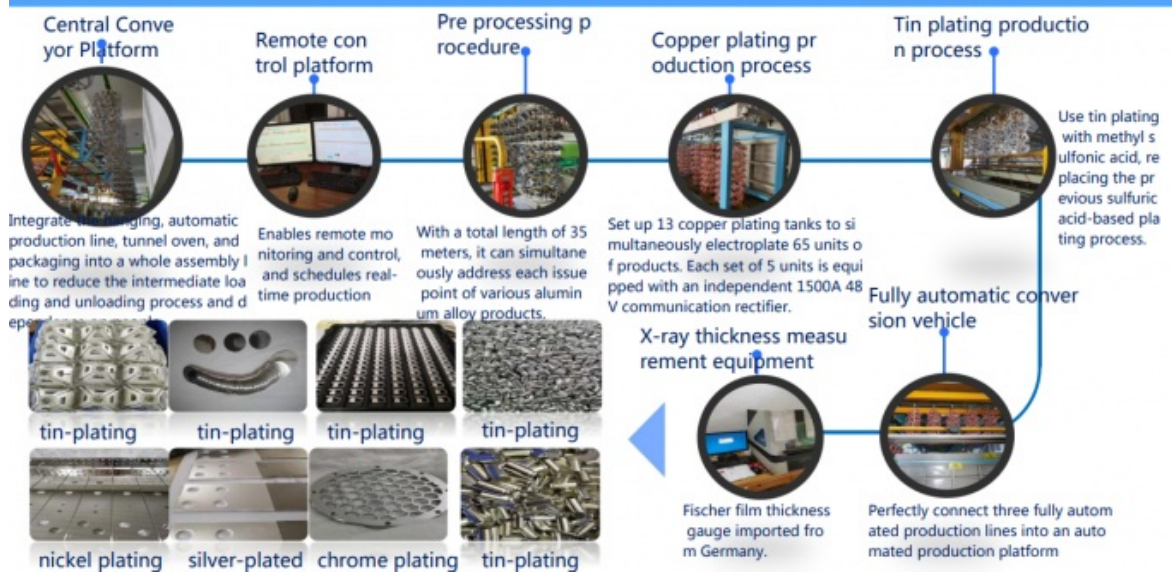


Key Process - Polishing Workshop

- Automatic polishing machine: 2 units, equipment can be increased according to product demand.
- Manual polishing stations: 15, with manpower allocated according to the product structure.



Key process - Metal parts electroplating workshop (automated assembly line)



Key process - Spray painting workshop (3 main lines+1 auxiliary line/small batch)

Reciprocating machine (automatic powder spraying)



Automatic Line 1



Automatic Line 2



Automatic Line 3

Characteristics of Spray Line:

- ◆ Characteristics of Spray Line: The system monitors the furnace temperature in real-time, and when the oven temperature does not meet the standard The system monitors the furnace temperature in real-time, and when the oven temperature does not meet the standard
- ◆ Automatic spraying: Reciprocating machine automatic spraying ensures uniform thickness and aesthetic appearance of the coating.
- ◆ Equipment resources: 3 main lines+1 auxiliary line, which can simultaneously meet the needs of different colors;
- ◆ Daily production capacity: 15,000 to 20,000 square meters per day

Key Process - Product Assembly Workshop



Large cabinet assembly line



Small cabinet with assembly line



IPX6 Spray Water Testing System



Small chassis wiring assembly line



Outdoor cabinet product assembly line



High voltage product assembly line

Key process - outdoor cabinet waterproof testing assembly line

■ Pipeline standard: IPX1-IPX5 waterproof rating, which can be adjusted and matched according to product requirements.



Trial water process diagram



Test water





+86 15817363697



lubenzhi@szdxzh.com



power-cabinets.com

Green Base Industrial Park, Longtian Street, Pingshan District, Shenzhen