

Online Uninterrupted Power Supply 1000va H1KR For Industrial And Commercial Use

Our Product Introduction

for more products please visit us on power-cabinets.com

Basic Information

- Place of Origin: CHINA
- Brand Name: SZDXZH
- Model Number: H1KR
- Minimum Order Quantity: 1 pcs
- Packaging Details: Woodcase/ Paper box
- Delivery Time: 15-25 days
- Payment Terms: T/T
- Supply Ability: 10000pcs/month



Product Specification

- Input Phase: Single Phase With Ground
- AC Mode To Batt. Mode 0 Second Transfer Time:
- Product Name: 1000VA Ups
- Battery Type: 12V/9ah
- Operation Humidity: 20-90 % RH @ 0- 40°C (non-condensing)
- Optional SNMP: Power Management From SNMP Manager And Web Browser
- Battery: 12V9ah
- Applications: Industrial And Commercial Use
- Highlight: Commercial Use Uninterrupted Power Supply, 1000va Online Uninterrupted Power Supply, Industrial Uninterrupted Power Supply



More Images



Product Description

Online Uninterrupted Power Supply 1000va H1KR For Industrial And Commercial Use

Application:

IT Equipment: Used to protect servers, routers, switches, and network appliances in data centers and server rooms to ensure uninterrupted operations.

Workstations: Ideal for powering individual computers and workstations in offices, enabling protection against data loss during power outages.

Telecommunications: Supports telecommunications equipment, ensuring reliable communication during power fluctuations or outages.

Point of Sale (POS) Systems: Guarantees continuous power for POS systems in retail environments, preventing disruptions during transactions.

Medical Equipment: Used in healthcare facilities to protect sensitive medical devices and machines, ensuring patient safety and operational continuity.

Security Systems: Powers security systems, including cameras and alarms, to maintain surveillance and safety even during power failures.

Financial Institutions: Essential for banks and financial services, where constant uptime is critical for transactions and data integrity.

Manufacturing and Automation: Supplies power to automation systems and machinery, preventing downtime and protecting sensitive electronic controls.

Home Office: Increasingly used in home office environments to secure computers, printers, and networking equipment from sudden power loss.

Broadcasting and Media: Supports broadcasting equipment and media production systems, ensuring uninterrupted service delivery.

Laboratories: Used in scientific and research laboratories to protect sensitive instruments and maintain consistent power for experiments.

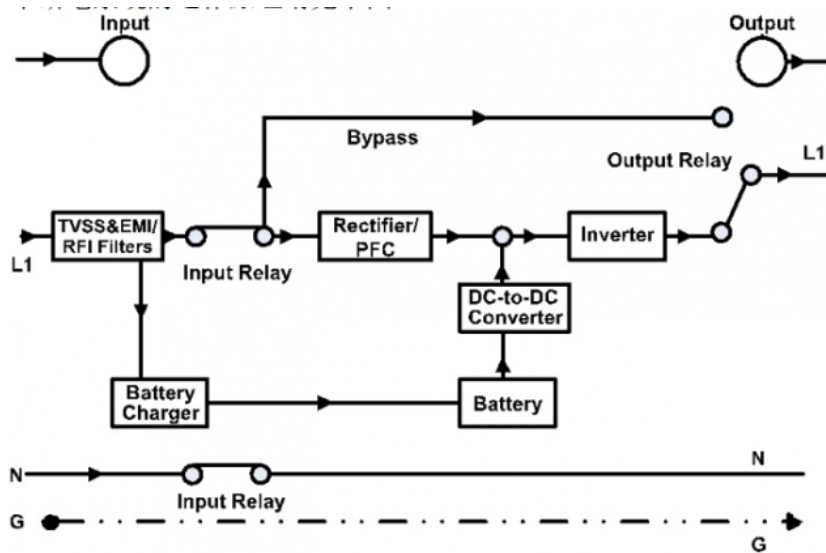
Gaming and Entertainment: Provides power protection for gaming consoles, PCs, and home theaters, ensuring a seamless experience without interruptions.

Technique parameter:

Rack UPS				
MODEL		1KR	2KR	3KR
CAPACITY*		1000 VA / 800 W	2000 VA / 1600 W	3000 VA / 2400 W
INPUT				
Voltage Range	Low Line Transfer	85VAC/75VAC/65VAC/55VAC±5% or 160VAC/140VAC/120VAC/110VAC±5% (Ambient Temp.<350C) (based on load percentage 100% - 80 % / 80 % - 70 % / 70 - 60 % / 60 % - 0)		
	Low Line Comeback	95VAC/85VAC/75VAC/65VAC or 175VAC/155VAC/135VAC/125VAC ± 5 % (Ambient Temp.<350C) (based on load percentage 100% - 80 % / 80 % - 70 % / 70 - 60 % / 60 % - 0)		
	High Line Transfer	145 VAC ± 5 % or 300 VAC ± 5 %		
	High Line Comeback	140 VAC ± 5 % or 290 VAC ± 5 %		
Frequency Range		40Hz ~ 70 Hz		
Phase		Single phase with ground		
Power Factor		≥ 0.99 @ nominal voltage (input voltage)		
OUTPUT				
Output voltage		100/110/115/120/127VAC or 200/208/220/230/240VAC		
AC Voltage Regulation		±1% (Batt. Mode)		
Frequency Range		47 ~ 53 Hz or 57 ~ 63 Hz (Synchronized Range)		
Frequency Range (Batt. Mode)		50 Hz ± 0.25 Hz or 60Hz ± 0.3 Hz		

Overload		Ambient Temp.<350C							
		105%~110%: UPS shuts down after 10 minutes at battery mode or transfer to bypass when the utility is normal							
		110%~130%: UPS shuts down after 1minute at battery mode or transfer to bypass when the utility is normal							
		>130%:UPS shuts down after 3 seconds at battery mode or transfer to bypass when the utility is normal							
Current Crest Ratio		3:1							
Harmonic Distortion		≤ 3 % THD (linear load); ≤ 6 % THD (non-linear load)							
Transfer Time	AC Mode to Batt. Mode	Zero							
	Inverter to Bypass	4 ms (Typical)							
Waveform (Batt. Mode)		Pure Sinewave							
EFFICIENCY									
AC Mode		88%		89%			90%		
Battery Mode		83%		87%			88%		
BATTERY									
Standard Model	Battery Type	12 V / 9 AH		12 V / 9 AH			12 V / 9 AH		
	Numbers	2		4			6		
	Recharge Time	4 hours recover to 90% capacity (Typical)							
	Charging Current	1.0 A (max.)							
	Charging Voltage	27.4 VDC ± 1%		54.7 VDC ±1%			82.1 VDC ±1%		
Long-run Model	Battery Numbers	2	3	4	6	8	6	8	
	Charging Current	1.0A/2.0A/4.0A/6.0 A							
	Charging Voltage	27.4 VDC ± 1%	41.0VDC ± 1%	54.7 VDC ±1%	82.1VDC ±1%	109.4VDC ±1%	82.1VDC ±1%	109.4VDC ±1%	
PHYSICAL									
Standard Model	Dimension, D X W X H	310 x 438 x 88 (mm)		410 x 438 x 88 (mm)			630 x 438 x 88 (mm)		
	Net Weight (kgs)	12		19			29.3		
Long-run Model	Dimension, D X W X H	310 x 438 x 88 (mm)		410 x 438 x 88 (mm)			410 x 438 x 88 (mm)		
	Net Weight (kgs)	9		12			14.2		
ENVIRONMENT									
Operation Humidity		20-90 % RH @ 0- 40°C (non-condensing)							
Noise Level		Less than 50dBA @ 1 Meter							
MANAGEMENT									
Smart RS-232 or USB		Supports Windows® 2000/2003/XP/Vista/2008/7/8, Linux, Unix and MAC							
Optional SNMP		Power management from SNMP manager and web browser							
* Derate capacity to 80% of capacity in Frequency converter mode or when the output voltage is adjusted to 200/208VAC. Product specifications are subject to change without further notice.									

Work principle:



Product pictures:





Installation:

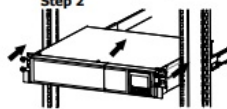
Rack-mount Installation

This UPS can be mounted in the 19" rack chassis. Please follow below steps to position this UPS.

Step 1



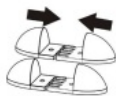
Step 2



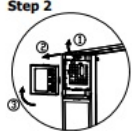
7

Tower Installation

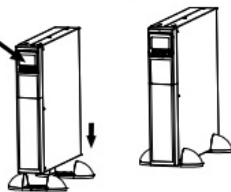
Step 1



Step 2



Step 3



Shenzhen Daxin Intelligent Equipment Technology Co., Ltd



+86 15817363697



lubenzhi@szdxzh.com



power-cabinets.com

Green Base Industrial Park, Longtian Street, Pingshan District, Shenzhen